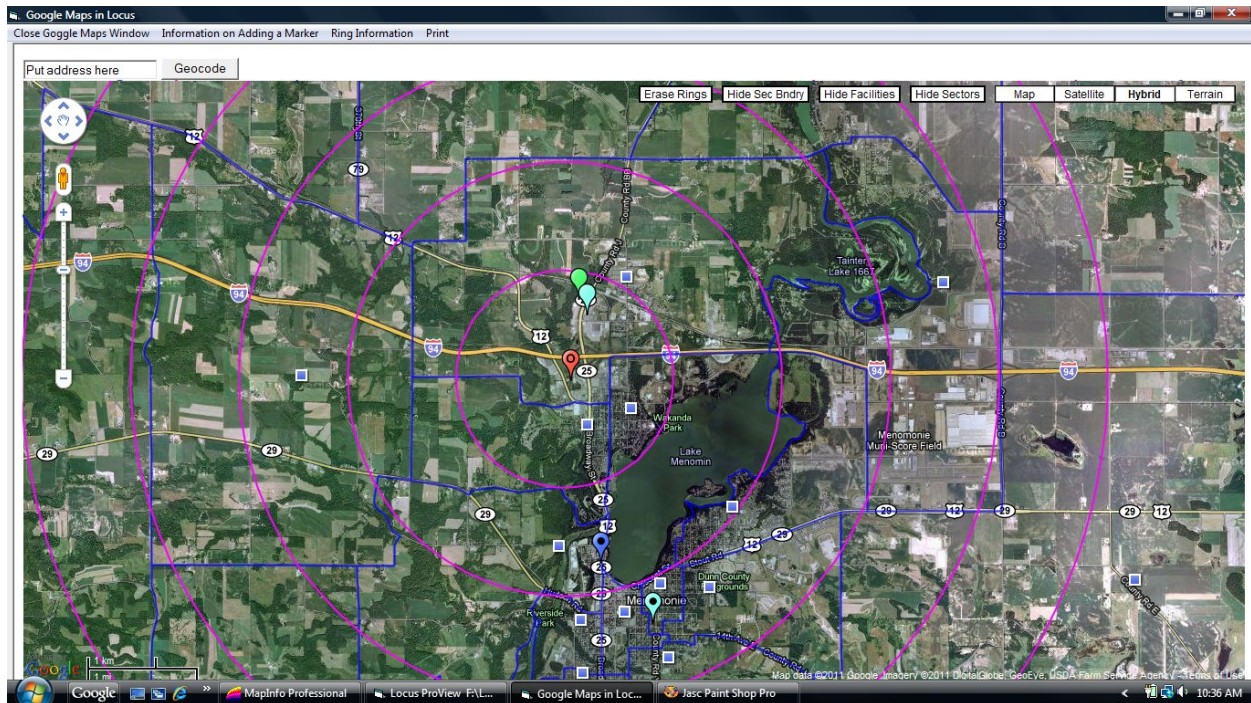


Locus™ ProView QUICK GUIDE

01/01/2011



To Run Google Maps from Locus™ ProView

To access Google Maps your computer must have internet access. Open the Locus™ ProView program and then a model. From the main menu choose the Display/Google Map option.

Data Flow

Unlike the Locus Display Path screen, **any additions or moves done in the Google Maps option will not be reflected in the Locus model** you are working in. The data must be copy/pasted back to the Locus model as covered below. If you wish to return to the original map view that reflects the Locus facility and sector spreadsheets or changes made in the Locus spreadsheets, the session of Google Maps option must be closed and reopened.

Navigation Controls

Navigation controls are in upper left corner. Clicking any of the four arrows in the circle will move the map in the direction of the arrow. The map can also be moved by dragging it. Just do not drag any of the place marks by accident. Clicking on the minus sign zooms out and clicking on the plus sign zooms in. Drag the button on the line between the plus and minus to zoom in or out.

Map Options

Map options are in the upper right corner. “Map” shows roads, water, parks, city names, etc. “Satellite” shows the satellite or aerial view. “Hybrid” shows the satellite with the roads, names and icons from the “Map” option. “Terrain” shows the terrain and the items on the “Map” option.

Scale

The scale is on the lower left corner and appears in kilometers and miles.

Sector Boundaries

If your sector boundaries are in a .dxf file they can be added to the map. The easiest way to add the sector boundaries is to put it in the directory with the balance or tactics file and name it as follows. If the balance name is AAA001.bal, name the sector boundary file AAA001SecB.dxf. If there is no such file name structure, Locus will ask you if you want to add a sector boundary file to Google Maps. If you click on yes Locus will have you locate the dxf file.

Sectors

Sectors are marked with a blue square. If you put your cursor over a sector, the sector number will appear. If you click a sector, sector information will appear. Any information with a value of zero will not be displayed (i.e. 0% college). The southern most information window will always be the top layer displayed. If you double click a sector, the location information will appear on top of the sector information. The location information will appear with the longitude first and the latitude second. This is different than the standard order for location information in Google Maps. It is the order used in the Locus spreadsheets.

Facilities

Facilities are marked with different colored paddles. There are nineteen different paddles (some with different colors and some with different shapes in them) which will be used to indicate the chain of the facility. If there are more than 19 different chains, then all chains with only one facility in the trade area will be white. If there are more than 19 chains with two or more facilities, then the paddles will be reused. If you put your cursor over a facility, the facility name and map key will appear. If you click a facility paddle, facility information will appear. Any information value of zero will not be displayed (i.e. "0" rating for deli). The southern most information window will always be the top layer displayed. If you double click a facility paddle the location information will appear on top of the facility information. The location information will appear with the longitude first and the latitude second. This is different than the standard order for location information in Google Maps. It is the order used in the Locus spreadsheets.

Hiding and Showing Sectors or Facilities

There are two buttons just to the left of the map option buttons (map, satellite, hybrid, terrain) at the top right of the map. If the sectors are showing on the map, clicking the Hide/Show Sectors button will remove the sectors. If the sectors are hidden the button will put them back on the map. The same is true for facilities and the Hide/Show Facilities button.

Moving Sectors or Facilities

The sectors and facilities can be moved to a new location by dragging them. If the associated information window is open, it should be closed and reopened to reflect the new location information. This does not change the information in the Locus model.

Creating New Markers

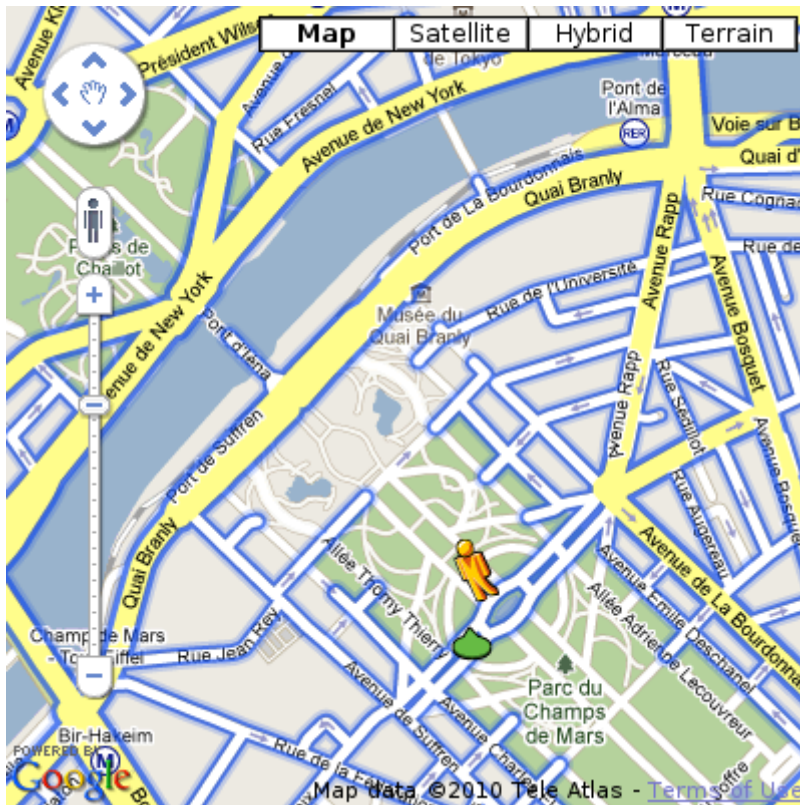
To add a marker to a new location, click on the map at that location. Putting your cursor on the new marker will show you the longitude and latitude. Clicking on the new marker will open an information box with the location information. You can create as many new markers as you wish but only the last created information box will be available.

Creating Rings

To add a set of concentric rings with radii from one to five miles click on the 'Create Rings' button. A message will appear asking you to click on the map where you want the ring centered. Note that the cursor must be an open hand. The cursor is a pointed hand when it is over a feature on top of the map (markers and rings). Clicking on a feature on top of the map will not create a new set of rings.

Street View

The Google Map Street View Pegman (upper left corner, control allows you to view Street View panoramas directly within the map. When clicking and holding the Pegman, the map updates to show Street View-enabled streets using blue outlines on the map:



Drop the Pegman marker onto a blue street and the map will update to display a Street View panorama of the indicated location. The navigation controls will pan the location where you dropped the Pegman. To exit Street View click on the gray x on the upper right hand corner of the picture.

Geocoding

To find an address or a zipcode on the map enter the address (ex. 123 Main Street, MyTown, MyState) or zip code (12345) in the text box just above the upper left corner of the map. Then click the Geocode button. Google Maps will center the map on your location and mark it with a red paddle with a black circle. If you hover your mouse pointer over the marker the latitude and longitude will appear.

Copy/Pasting

Any of the information in the windows can be copied by highlighting the info you want to copy and pressing control C or right click, then copy. Then select the target cell in the Locus spreadsheet and press control V or right click and paste.

To Print, Close, Save Image

To **print** the current map click on the menu item “Print”.

To **save image**, select print, then select Adobe pdf (or similar program) as your printer. Save this file to your project folder.

To **close** Google Maps either click on the menu item “Close Google Maps Window” or click on the X in the upper right corner.

HTML

When the Google Maps option is opened in Locus, a *temp* file is created in the same folder as the Locus model file. Look for a file named xxxxGoogleMapTemp.html. The x's will be the Locus model name. It is rewritten, copying over the previous temp file each time you open "Display Google Maps". This file is a program that when run will function just as it does in Locus ProView. This is a handy tool for displaying trade area information when the Locus program is not available. Images can be printed/saved from here also.

Google Maps/Earth Terms of Service

By downloading, installing, or using the Google Earth software, accessing or using the Google Maps service (together, the "Products" or "Services"), or accessing or using any of the content available within the Products, you agree to be bound by the following: (1) the [Google Terms of Service](#) (the "Universal Terms"); (2) the terms found on our [Legal Notices](#) page (the "Legal Notices"); and (3) the additional terms and conditions set forth below (the "Additional Terms"). Before you continue, you should read each of these three documents, as together they form a binding agreement between you and Google regarding your use of the Products. Collectively, the Universal Terms, the Legal Notices, and the Additional Terms are referred to as the "Terms".

As a condition of downloading, accessing, or using the Products, you also agree to the terms of the [Google Privacy Policy](#).

1. Use of the Products. Google grants you a non-exclusive, non-transferable license to access the Google Maps service, to download and use the Google Earth software and service, and to access the Content (as defined below) within the Products and according to the Terms.

2. Restrictions on Use. Unless you have received prior written authorization from Google (or, as applicable, from the provider of particular Content), you must not:

- (a) access or use the Products or any Content through any technology or means other than those provided in the Products, or through other explicitly authorized means Google may designate (such as through the [Google Maps/Google Earth APIs](#));
- (b) copy, translate, modify, or make derivative works of the Content or any part thereof;
- (c) redistribute, sublicense, rent, publish, sell, assign, lease, market, transfer, or otherwise make the Products or Content available to third parties;
- (d) reverse engineer, decompile or otherwise attempt to extract the source code of the Service or any part thereof, unless this is expressly permitted or required by applicable law;
- (e) use the Products in a manner that gives you or any other person access to mass downloads or bulk feeds of any Content, including but not limited to numerical latitude or longitude coordinates, imagery, and visible map data;
- (f) delete, obscure, or in any manner alter any warning, notice (including but not limited to any copyright or other proprietary rights notice), or link that appears in the Products or the Content; or
- (g) use the Service or Content with any products, systems, or applications for or in connection with (i) real time navigation or route guidance, including but not limited to turn-by-turn route guidance that is synchronized to the position of a user's sensor-enabled device; or (ii) any systems or functions for automatic or autonomous control of vehicle behavior.

3. Appropriate Conduct; Compliance with Law and Google Policies. You agree that you are responsible for your own conduct and content while using the Products, and for any consequences thereof. You agree to use the Products only for purposes that are legal, proper and in accordance with the Terms and any applicable policies or guidelines Google may make available. By way of example, and not as a limitation, you agree that when using the Products or the Content, you will not:

- (a) defame, abuse, harass, stalk, threaten or otherwise violate the legal rights (such as rights of privacy and publicity) of others;
- (b) upload, post, email, transmit or otherwise make available any inappropriate, defamatory, obscene, or unlawful content;
- (c) upload, post, transmit or otherwise make available any content that infringes any patent, trademark, copyright, trade secret or other proprietary right of any party, unless you are the owner of the rights, or have the permission of the owner or other legal justification to use such content;
- (d) upload, post, email, transmit or otherwise make available messages that promote pyramid schemes, chain letters, or disruptive commercial messages or advertisements;
- (e) upload, post, email, transmit or otherwise make available any other content, message, or communication prohibited by applicable law, the Terms or any applicable Product policies or guidelines;
- (f) download any file posted by another that you know, or reasonably should know, cannot be legally distributed in such manner;
- (g) impersonate another person or entity, or falsify or delete any author attributions or proprietary designations or labels of the origin or source of Content, software or other material;
- (h) restrict or inhibit any other user from using and enjoying the Products or Google services;
- (i) interfere with or disrupt Google services or servers or networks connected to Google services, or disobey any requirements, procedures, policies or regulations of networks connected to Google services;
- (j) use any robot, spider, site search/retrieval application, or other device to retrieve or index any portion of the Google services or Content, or collect information about users for any unauthorized purpose;
- (k) submit content that falsely expresses or implies that such content is sponsored or endorsed by Google;
- (l) create user accounts by automated means or under false or fraudulent pretenses;

- (m) promote or provide instructional information about illegal activities;
- (n) promote physical harm or injury against any group or individual; or
- (o) transmit any viruses, worms, defects, Trojan horses, or any items of a destructive nature.

4. Content in the Products. Google Maps and Google Earth allow you to access and view a variety of content, including but not limited to photographic imagery, map and terrain data, business listings, reviews, traffic, and other related information provided by Google, its licensors, and its users (the "**Content**"). Additionally, you may choose to access other third party content made available in the Products through Google services such as Google Gadgets. You understand and agree to the following:

(a) Map data, traffic, directions, and related Content are provided for planning purposes only. You may find that weather conditions, construction projects, closures, or other events may cause road conditions or directions to differ from the map results. You should exercise judgment in your use of this Content.

(b) By using the Products, you do not receive any, and Google and/or its licensors and users retain all ownership rights in the Content. You may not use, access or allow others to use or access the Content in any manner not permitted under the Terms, unless you have been specifically permitted to do so by Google or by the owner of that Content, in a separate agreement.

(c) Certain Content is provided under [license from third parties](#), including but not limited to Tele Atlas B.V. ("**Tele Atlas**"), and is subject to copyright and other intellectual property rights owned by or licensed to Tele Atlas and/or such third parties. You may be held liable for any unauthorized copying or disclosure of this Content. Your use of Tele Atlas Content, including but not limited to printing or use in marketing or promotional materials, is subject to additional restrictions located in the [Legal Notices](#) page.

5. Additional Terms for Google Earth.

(a) Export Restrictions. The Google Earth software is subject to United States export controls. By using the Google Earth software, you agree to use the software only for purposes that are legal, proper and in accordance with these Terms. Specifically, you agree to comply with all applicable export and reexport control laws and regulations, including the Export Administration Regulations ("**EAR**") maintained by the U.S. Department of Commerce, and trade and economic sanctions maintained by the Treasury Department's Office of Foreign Assets Control.

(b) Automatic Updates. The Google Earth software may communicate with Google servers from time to time to check for available updates to the software, such as bug fixes, patches, enhanced functions, missing plug-ins and new versions (collectively, "**Updates**"). By installing the Google Earth software, you agree to automatically request and receive Updates.

6. DISCLAIMER OF WARRANTIES AND LIMITATIONS ON LIABILITY.

(a) GOOGLE AND ITS LICENSORS (INCLUDING BUT NOT LIMITED TO TELE ATLAS AND ITS SUPPLIERS) MAKE NO REPRESENTATIONS OR WARRANTIES REGARDING THE ACCURACY OR COMPLETENESS OF ANY CONTENT OR THE PRODUCTS.

(b) SUBJECT TO SECTION 14.1 OF THE GOOGLE UNIVERSAL TERMS, GOOGLE AND ITS LICENSORS (INCLUDING BUT NOT LIMITED TO TELE ATLAS AND ITS SUPPLIERS) DISCLAIM ALL WARRANTIES IN CONNECTION WITH THE CONTENT AND THE PRODUCTS, AND WILL NOT BE LIABLE FOR ANY DAMAGE OR LOSS RESULTING FROM YOUR USE OF THE CONTENT OR THE PRODUCTS.

7. U.S. Government Restricted Rights. If the Products are being used or accessed by or on behalf of the United States government, such use is subject to additional terms located in the "Government End Users" section of our [Legal Notices](#) page.